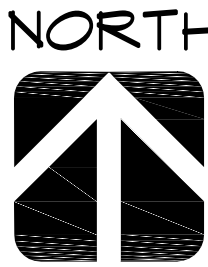


EXTERIOR DOORS									
	No.	LOCATION	SIZE (INCHES)		TYPE	MATERIAL	FINISH	THRESHOLD	REMARKS
			WIDTH	HEIGHT					
Grd. FL.	101	ENTRY LOBBY	36	80	STORE FRONT	ALUM. & GLASS	FACTORY-COATED	ALUMINUM	CATEG II SAFETY GLASS SELF CLOSING AND SELF LATCHING (1.5 H. FIRE)
	102	STAIRS	36	80	SWING	STEEL	PAINTED	-	
	103	ELECT. ROOM	36	80	SWING	STEEL	PAINTED	-	(1.5 H. FIRE)
	104	DUMPSTER	102	72	SLIDING	STEEL	PAINTED	-	SELF CLOSING AND SELF LATCHING
	105	ENTRY PARKING GARAGE	180	80		STEEL	PAINTED	-	(1.5 H. FIRE)
	106	ENTRY LOBBY	72	80	STORE FRONT	ALUM. & GLASS	FACTORY-COATED	ALUMINUM	CATEG II SAFETY GLASS
3rd & 2nd FL.	201	DWELLING UNITS	60	80	XO SLIDING	ALUM. & GLASS	FACTORY-COATED	ALUMINUM	(1.5 H. FIRE)
	301	DWELLING UNITS	60	80	XO SLIDING	ALUM. & GLASS	FACTORY-COATED	ALUMINUM	CATEG II SAFETY GLASS
INTERIOR DOORS AT CORRIDOR									
	No.	LOCATION	SIZE (INCHES)		TYPE	MATERIAL	FINISH	THRESHOLD	REMARKS
			WIDTH	HEIGHT					
2nd FL.	211	ENTRY UNITS	36	80	SWING	STEEL	PAINTED	-	(1.5 H. FIRE)
	212	STAIRS	36	80	SWING	STEEL	PAINTED	-	SELF CLOSING AND SELF LATCHING (1.5 H. FIRE)
3rd FL.	311	ENTRY UNITS	36	80	SWING	STEEL	PAINTED	-	(1.5 H. FIRE)
	312	STAIRS	36	80	SWING	STEEL	PAINTED	-	SELF CLOSING AND SELF LATCHING (1.5 H. FIRE)
NOTE: FOR FIRE DOOR RESISTANCE REFER TO TABLE 716.5 OF FBC 2017.									
NOTES:									
1.-ALL EXTERIOR DOORS & ALL WINDOWS TO BE IMPACT-RESISTANT. MANUFACTURER & CHARACTERISTICS (COLOR, GLASS TINT, ETC.) TO BE CHOSEN BY CLIENT									
2.-THIS DESIGN IS BASED ON 1/8" WINGWALL WINDOWS & DOORS, THOUGH APPROVED EQUAL MANUFACTURER COULD BE USED AS WELL.									
3.-COORDINATE MASONRY OPENINGS W/ DOORS & WINDOWS MANUFACTURER PRIOR TO WALL ERECTION. SUBMIT SHOP DRAWINGS FOR APPROVAL									
4.-GLASS CHARACTERISTICS: U-FACTOR: Sgl,U=1.20 SHGC=0.50									
5.-ALL GLASSING MUST BE CATEGORY II, SAFETY GLASS. MANUFACTURER SHALL STORE GLASS ON SITE READILY ACCESSIBLE FOR INSPECTION									

INTERIOR DOORS INSIDE DWELLING UNITS									
1st FL., 2nd FL., & 3rd FL.	No.	LOCATION	SIZE (INCHES)		TYPE	MATERIAL	FINISH	THRESHOLD	REMARKS
			WIDTH	HEIGHT					
	U1	BEDROOM	36	80	SWING	WOOD	PAINTED	-	
	U2	BATHROOM	32	80	SWING	WOOD	PAINTED	-	
	U2A	BATHROOM(GROUND)	36	80	SWING	WOOD	PAINTED	-	32" MIN DOOR CLEARANCE
	U3	AIR CONDITION	32	80	BI-FOLD, LOUVERED	METAL	PAINTED	-	
	U4	CLOSET	36	80	BI-FOLD	WOOD	PAINTED	-	
	U5	CLOSET	30	80	BI-FOLD	WOOD	PAINTED	-	
U6	CLOSET	24	80	BI-FOLD	WOOD	PAINTED	-		
WINDOW SCHEDULE									
	No.	LOCATION	SIZE (INCHES)		TYPE	MATERIAL	FINISH	REMARKS	NOA
			WIDTH	HEIGHT					
2nd FL.	201	LIVING & KITCHEN	53 1/8	38 3/8	HORIZONTAL-ROLLING HR 4131	ALUM. & GLASS	FACTORY-COATED		19-0708.09
	202	BEDROOM	53 1/8	50 5/8	HORIZONTAL-ROLLING HR 4141	ALUM. & GLASS	FACTORY-COATED	EGRESS-COMPLIANT	19-0708.09
	203	BATHROOM	37	38 3/8	HORIZONTAL-ROLLING	ALUM. & GLASS	FACTORY-COATED		19-0708.09
	204	BATHROOM	26 1/2	38 3/8	HORIZONTAL-ROLLING	ALUM. & GLASS	FACTORY-COATED		19-0708.09
3rd FL.	301	LIVING & KITCHEN	53 1/8	38 3/8	HORIZONTAL-ROLLING HR 4131	ALUM. & GLASS	FACTORY-COATED		19-0708.09
	302	BEDROOM	53 1/8	50 5/8	HORIZONTAL-ROLLING HR 4141	ALUM. & GLASS	FACTORY-COATED	EGRESS-COMPLIANT	19-0708.09
	303	BATHROOM	37	38 3/8	HORIZONTAL-ROLLING	ALUM. & GLASS	FACTORY-COATED		19-0708.09
	304	BATHROOM	26 1/2	38 3/8	HORIZONTAL-ROLLING	ALUM. & GLASS	FACTORY-COATED		19-0708.09

LEGEND:	
	8" WIDE CONCRETE MASONRY UNIT (C.M.U.)
	WALL IN ACCORDANCE W/ACI 530-92 / ASCE 5-92 / TMS 402-92. SEE STRUCTURAL DRAWINGS. (SEE DETAIL 1, A-3)
	4" WIDE 1-HR FIRE-RATED PARTITION UNIT (SEE DETAIL 2, A-3)
	4" WIDE PARTITION (SEE DETAIL 3, A-3)
	12" x 16" CONCRETE COLUMN
	DOOR TYPE
	WINDOW TYPE
	PARKING LOT SPACE
	CONCRETE
	PROPERTY CORNER
	PROPERTY LINE
	WATER METER
	GREEN AREA (GRASS)



REVISIONS

NO.	DESCRIPTION

THESE DRAWING & SPECIFICATIONS ARE INSTRUMENTS OF SERVICE AND SHALL REMAIN THE PROPERTY OF RUBEN JUAN PUJOL ARCHITECT, P.A. FOR WHICH THEY WERE PREPARED. IF NOT USED IN ANY MANNER ON OTHER PROJECTS OR EXTENSIONS TO THIS PROJECT EXCEPT BY AGREEMENT IN WRITING AND WITH THE APPROPRIATE COMPENSATION TO RUBEN JUAN PUJOL & ASSOCIATES.

NEW MULTIFAMILY BUILDING (8 UNITS)

OWNER: BRANESP REALTY VENTURES LLC
ADDRESS: 524 N. RIVERSIDE DRIVE
POMPAHO BEACH, FLORIDA 33062

Rub
en J
Pujol

Digitally signed
by Ruben J
Pujol
Date:
2020.05.20
12:38:57 -04'00'

RUBEN JUAN PUJOL
ARCHITECT, P.A.

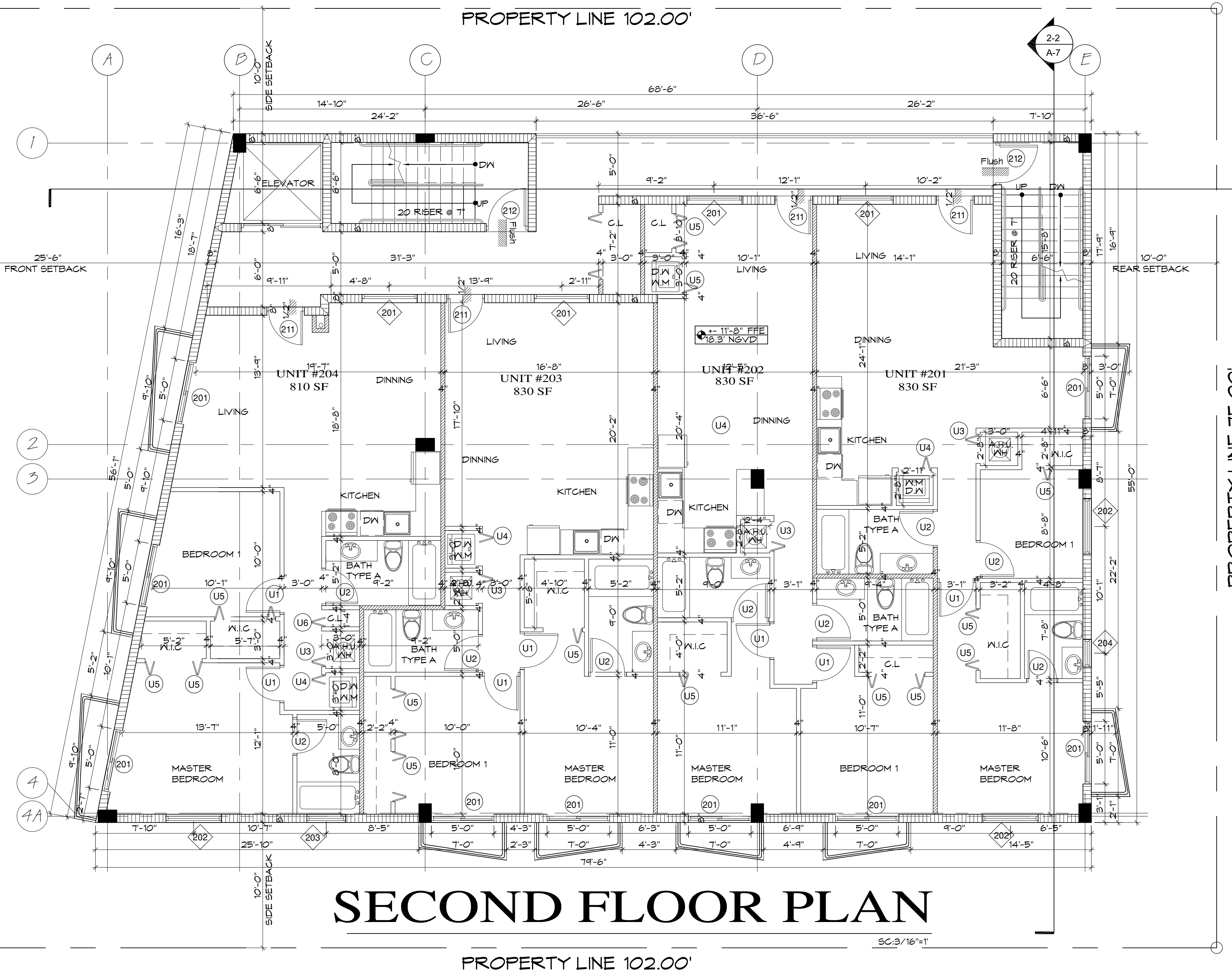
ALA AR #0010458
ALA 26002479
237 S.W. 204 TERRACE
MIAMI, FLORIDA 33161
PHONE: (305) 441-1365

DRC

PZ20-12000042
1/20/21

ROOM FINISH SCHEDULE				
ROOM	FLOOR	WALLS	CEILING	REMARKS
LIVING ROOM		CERAMIC TILE	DRYWALL	
DINING ROOM		CERAMIC TILE	DRYWALL	
KITCHEN		CERAMIC TILE	DRYWALL	* NON- SLIPPERY / IMPERVIOUS
BEDROOMS		CERAMIC TILE	DRYWALL	
BATHS		CERAMIC TILE	TILE/DRYWALL*	* NON- SLIPPERY / IMPERVIOUS
MASTER BEDROOM		CERAMIC TILE	DRYWALL	
N.I.C.		CERAMIC TILE	DRYWALL	
ELECT. ROOM		CONCRETE	SMOOTH STUCCO	
STAIRS		CONCRETE	SMOOTH STUCCO	* Bull nose slabs @ steps/ non- slippery
HALLWAY		CERAMIC TILE	SMOOTH STUCCO	* NON- SLIPPERY / IMPERVIOUS
PARKING AREA		ASPHALT	SMOOTH STUCCO	* non- slippery
BALCONY		CERAMIC TILE	SMOOTH STUCCO	* NON- SLIPPERY / IMPERVIOUS
DUMPSTER		CONCRETE	SMOOTH STUCCO	* non- slippery
BIKE RACK		CONCRETE	SMOOTH STUCCO	* non- slippery

PROPERTY LINE 76.42'



SECOND FLOOR PLAN

PROPERTY LINE 102.00'